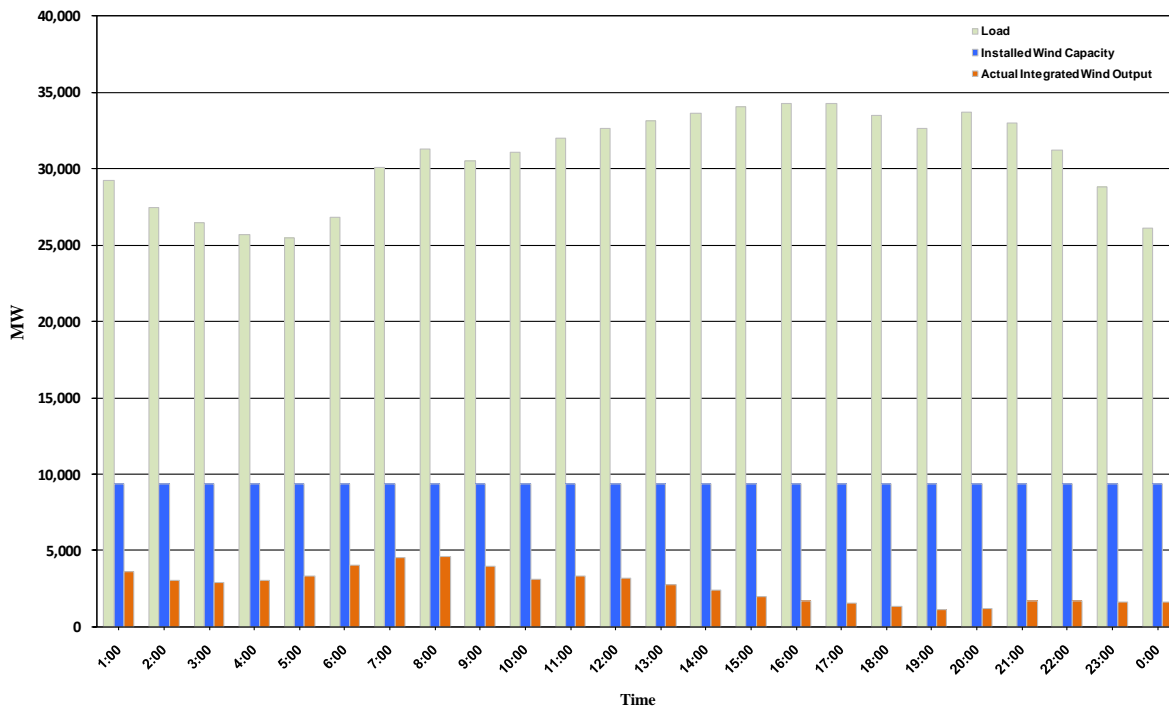




ERCOT Grid Operations Wind Integration Report: 10/28/10

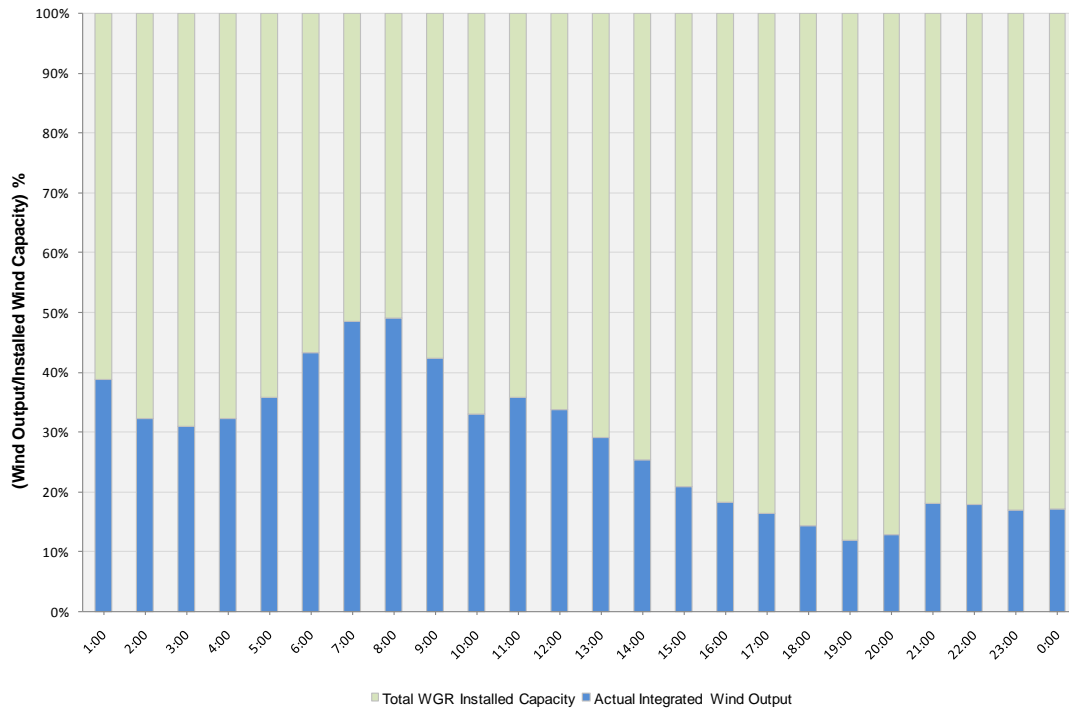
Peak Load	34,279 MW
Load Peak Hour	16
Wind Record 06/12/10	7016 MW
Max Wind value	4938 MW
Wind Peak Hour	06:52:00
Wind Integration %	15.87

Hourly Average Actual Load vs. Actual Wind Output
10-28-2010

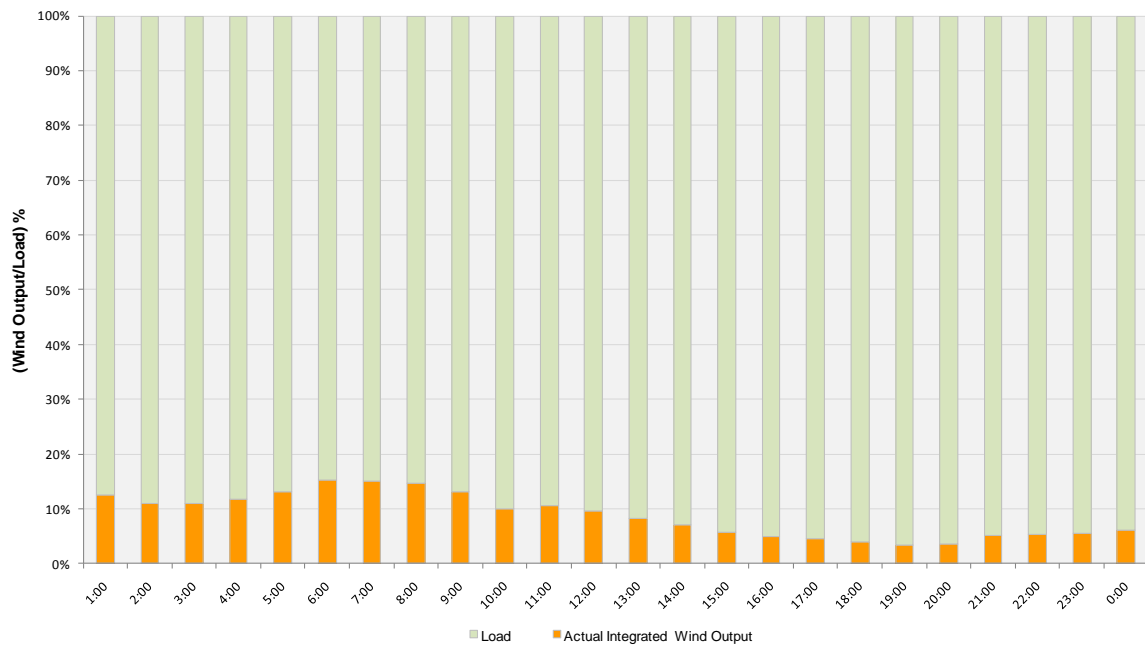




Actual Wind Output as a Percentage of the Total Installed Wind Capacity
10-28-2010



Actual Wind Output as a Percentage of the ERCOT Load
10-28-2010





ERCOT Load vs. Actual Wind Output 10/21/10 - 10/28/10

